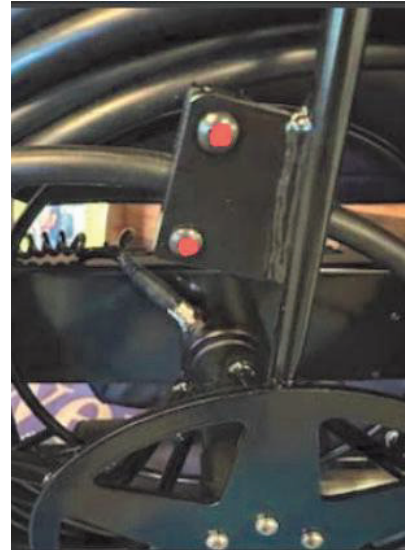


Reel & Hub Removal JR

Step 1 – Loosen Clamp Screws

Loosen the two screws shown.

This removes cable tension only.



Step 2 – Unthread Collar and Remove Connector

Unthread collar and pull connector straight out.

If tight, remove clamp from Step 1.



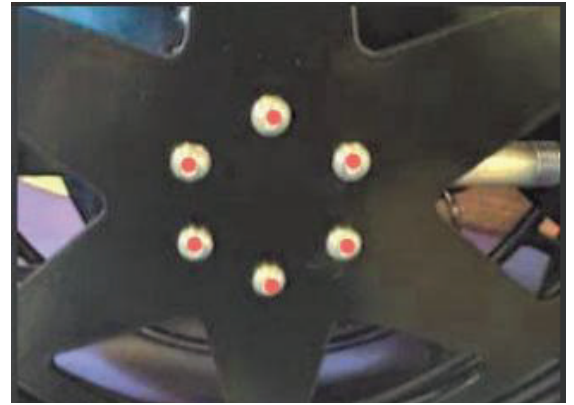
Step 3 – Remove Small Retaining Bolt

Remove the single small bolt near where the connector was removed



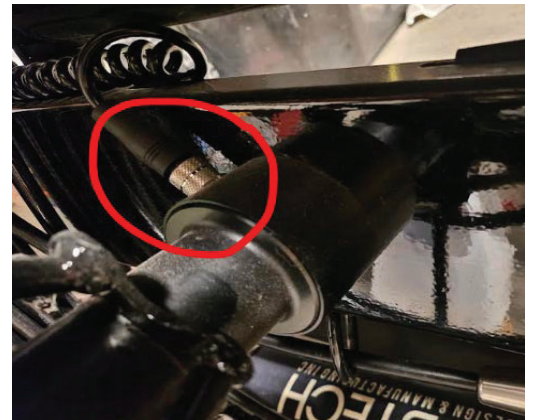
Step 4 – Remove Front Reel Bolts

Remove six front bolts. **Slide** reel out.



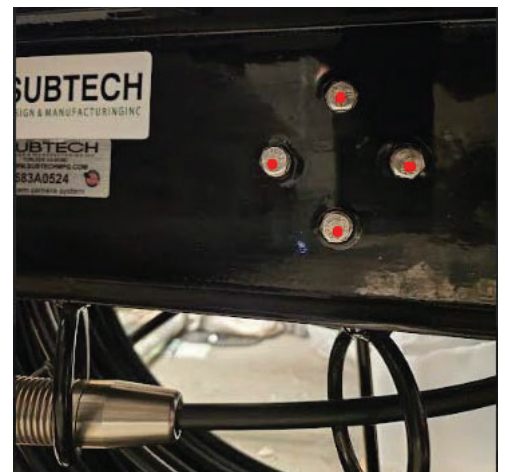
Step 5 – Remove Interface Cable Remove

black curly cord from hub. **Unplug** connector and pull straight out.



Step 6 – Remove Hub Mounting Bolts

Remove four rear bolts. Carefully **slide** hub out.



****Reinstall:**** Reverse steps. ****Caution:**** Pull connector straight in/out only to avoid pin damage.